

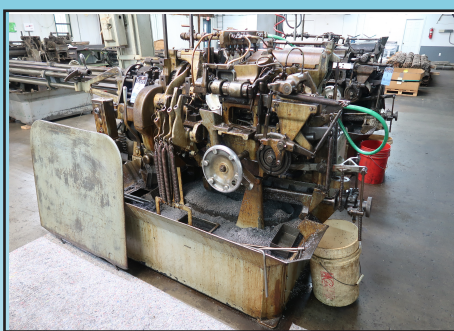
PUBLIC AUCTION



SALE CATALOG

Online Only Auction
**TENNESSEE SCREW
MACHINE CO., INC.**

4209 Smithville Highway
McMinnville, TN 37110



BIDDING ENDS:

THURSDAY, DECEMBER 5TH, 2019 - 11:00 AM

18% BUYER'S PREMIUM IS IN EFFECT FOR THIS SALE!

NO MERCHANDISE MAY BE REMOVED WHILE THE SALE IS IN PROGRESS!

ALTHOUGH INFORMATION HAS BEEN OBTAINED FROM SOURCES DEEMED RELIABLE, THE AUCTIONEER MAKES NO WARRANTY FOR GUARANTEE EXPRESSED OR IMPLIED, AS TO THE ACCURACY OF THE INFORMATION HEREIN CONTAINED. IT IS FOR THIS REASON THAT BUYERS SHOULD AVAIL THEMSELVES FOR THE OPPORTUNITY TO MAKE INSPECTION PRIOR TO THE SALE.



Sale Under the Management of

CINCINNATI **INDUSTRIAL AUCTIONEERS**

auctioneers | appraisers | since 1961 | cia-auction.com | info@cia-auction.com
2020 Dunlap St., Cincinnati, Ohio 45214 Phone 513-241-9701 Fax 513-241-6760

SYNOPSIS OF THE TERMS OF SALE

TENNESSEE SCREW MACHINE CO., INC.

4209 Smithville Highway, McMinnville, TN 37110

BIDDING ENDS: THURSDAY, DECEMBER 5TH, 2019 – 11:00 AM

REGISTRATION: All Bidders must register and complete the bidder registration form, removal agreement and sales tax exemption forms sent by the auctioneer after registering for the auction on www.bidspotter.com.

"AS IS, WHERE IS": Everything is being sold for cash on an "as is", "where is" basis without warranties expressed or implied on part of the Owner and Auctioneer. There are NO REFUNDS, NO EXCHANGES, NO GUARANTEES or NO WARRANTIES on any item. **ALL SALES ARE FINAL.** Buyer is responsible for all loading and removal costs.

DEPOSITS: At the Auctioneer's discretion, Bidders may be required to post a deposit upon registration.

PAYMENTS: BUYER'S INVOICES MUST BE PAID IN FULL WITHIN 24 HOURS AT THE CLOSE OF THE AUCTION. Any merchandise not paid for by this specified time will be considered abandoned and may be resold by the auctioneer, any loss incurred in the resale to be borne by the original buyer. All payments must be made by **Wire Transfer or by Checks via Express Mail.** All payments must be made to CIA office, **NO ONSITE PAYMENTS WILL BE ACCEPTED.**

REMOVAL LOCATION:

"TIME IS OF THE ESSENCE" ALL ITEMS MUST BE OFF THE PREMISES BY WEDNESDAY, DECEMBER 18TH at 4:00 PM.

At the Owners Discretion, any items remaining after this time will be removed from the premises and stored at the expense of the buyer, considered abandoned and scrapped.

CHECKOUT:

Friday, December 6th From 8:00 AM to 4:00 PM

Monday, December 9th – Friday, December 13th From 8:00 AM – 4:00 PM

Monday, December 16th – Wednesday, December 18th By Appointment Only!

IMPORTANT AUCTION NOTICES:

18% BUYERS PREMIUM IS IN EFFECT FOR THIS SALE!

ALL BUYERS WILL BE REQUIRED TO EXECUTE AN "AUCTION PURCHASE REMOVAL AGREEMENT"

NOMERCHANDISEMAYBEREMOVEDWHILETHESALEISINPROGRESS!!! ALL

SALES SUBJECT TO STATE AND LOCAL SALES TAX WHERE APPLICABLE

ALL BIDDERS MUST COMPLY WITH OUR CUSTOMARY "TERMS OF SALE" ATTACHED HERETO, POSTED AT THE SALE SITE & OUR WEBSITE @ WWW.CIA-AUCTION.COM.

Auctioneer CANNOT Assist with Export Documents!

All Titles will be mailed 7 – 14 Business days after payment!

WIRING INSTRUCTIONS

The balance of your invoice may be wired directly to our bank: PNC
Bank, 201 East Fifth Street, Cincinnati, Ohio 45201

Call for Complete Wire Transfer Instructions

PLEASE SPECIFY YOUR BIDDER NUMBER WHEN MAKING YOUR WIRE TRANSFER

NOTE: A BANK WIRE TRANSFER FEE WILL APPLY WHICH IS NOT INCLUDED IN BALANCE DUE OF INVOICE



CINCINNATI INDUSTRIAL AUCTIONEERS

auctioneers | appraisers | since 1961 | cia-auction.com | info@cia-auction.com
2020 Dunlap St., Cincinnati, Ohio 45214 Phone 513-241-9701 Fax 513-241-6760

ONLINE TERMS OF SALE

NOTICE: All Bidders and other persons participating in this sale agree that they have read and have full knowledge of these terms and agree to be bound thereby.

- 1. IDENTIFICATION** - All purchases are required to give full name and addresses at time of registration. Auctioneer, at its sole discretion, may deny registration to any person or entity.
- 2. DEPOSIT & BIDDER APPROVAL** - Each bidder will be required to post a deposit in cash, certified check or bank letter of guarantee if stated or may be required to continue bidding if monetary threshold has been reached. Failure to make a required deposit may result in suspension of bidding privileges.
- 3. TIME OF PAYMENT** - All invoices must be paid in full within 48 hours of the sales conclusion. Any other arrangements must be made with auctioneer prior to bidding. If not, the merchandise will be deemed abandoned and Buyer will lose any right, title or interest Buyer may have acquired and the merchandise shall revert and repossess to Auctioneer without further notice to Buyer and the transaction shall be null and void as to Buyer.
- 4. REMOVAL** - All purchases must be removed not later than the date specified in the Auction Catalogue and/or announced on the website. In any case, No later than 14 days after the close of the sale. All goods are sold "Where Is". Removal shall be at the expense, risk and liability of the Buyer. Purchases will be delivered only on presentation of paid bill. Auctioneer shall not be responsible for goods not removed within the time allowed, but shall have the option to remove and store at the expense and risk of the Buyer any article purchased, but not paid for and removed within the time aforesaid.
- 5. MANNER OF PAYMENT** - All payments must be made by cash, cashier's check or company check with a bank letter of authorization guaranteeing funds to Cincinnati Industrial Auctioneers, Inc. All checks for deposits and balances due shall be payable to the order of "Cincinnati Industrial Auctioneers, Inc." All invoices must be paid to the Auctioneer at the office address 2020 Dunlap St. Cincinnati, Ohio 45214 unless otherwise announced. The full purchase price on all lots sold to the same Buyer must be paid within the time fixed and before removal of any goods.
- 6. CONDITION OF ARTICLES SOLD** - The auctioneer shall not be responsible for the correct description, genuineness, authenticity of, or defect in any lot, and makes no warranty in connection therewith. No sale will be set aside nor allowance made on account of any incorrectness, error in commentary, cataloging, or any imperfection not noted. No deduction allowed on damaged articles, all goods being exposed for public exhibition, are purchased and accepted by Buyer "AS IS", "WHERE IS" and "WITH ALL FAULTS". Auctioneer makes no warranties or guarantees whatsoever whether written, oral or implied as to quality, quantity, condition, usability, salability, weight, measurement, year, model, mechanical condition, performance or other specifications and without recourse.
- 7. CLAIMS** - No Claims will be allowed after removal of goods from premises.
- 8. RESPONSIBILITY FOR NON-DELIVERY** - Auctioneer shall not, in any event, be liable for non-delivery or for any other matter or thing, to any Buyer of any lot, other than for the return to the Buyer of the deposit or sum paid on said lot, should the Buyer be entitled thereto.
- 9. COMPLIANCE WITH TERMS OF SALE** - In default of payment of bills in full within the time therein specified, the auctioneer in addition to all other remedies allowed by law, may retain all monies received as deposit or otherwise, as liquidated damages. Lots not paid for and removed within the time allowed herein may be resold at public or private sale without further notice, and any deficiency, together with all expenses and charges of re-sale, will be charged to the defaulting purchaser.
- 10. RISK TO PERSON AND PROPERTY** - Persons attending during exhibition, sale or removal of goods assume all risks of damage of or loss to person and property and specifically release the auctioneer from liability therefor. Neither the auctioneer nor his principal shall be liable by reason of any defect in or condition of the premises on which the sale is held.
- 11. ADDITION TO OR WITHDRAWAL FROM SALE** - The auctioneer reserves the right to alter the order of the sale, withdrawal from the sale any of the property listed or to sell at this sale property not listed, and also reserves the right to group one or more lots into one or more selling lots or to subdivide into two or more selling lots. Whenever the best interest of the Seller will be served, the Auctioneer reserves the right to sell property listed, in bulk.
- 12. SALE BY ESTIMATED WEIGHT, COUNT OR MEASURE** - Where items are sold by estimated weight, count or measure, the Buyer will be billed for and required to pay for the estimated weight, count or measure. If, upon delivery, any



CINCINNATI INDUSTRIAL AUCTIONEERS
auctioneers | appraisers | since 1961 | cia-auction.com | info@cia-auction.com
2020 Dunlap St., Cincinnati, Ohio 45214 Phone 513-241-9701 Fax 513-241-6760

shortage exists, the Buyer will receive a refund at the rate of the purchase. If there be an excess, the Buyer will be required to take and pay for such excess, at the rate of the purchase.

- 13. DISPUTE BETWEEN BIDDERS/BID INCREMENTS**—If any dispute arises between two or more bidders, the auctioneer may decide the same or put the lot up for sale again at once, or resell to the highest bidder. The Auctioneer may reject a nominal or fractional bid advance if, in his estimation, it proves injurious to the sale. The auctioneer's decision shall be final and absolute.
- 14. RESERVE**—The auctioneer reserves the right to reject any and all bids. On lots upon which there is a reserve, the auctioneer shall have the right to bid on behalf of the seller.
- 15. RECORDS**—The record of sale kept by the auctioneer and bookkeeper will be taken as final in the event of any dispute.
- 16. AGENCY**—The auctioneer is acting as agent only and is not responsible for the acts of its principals.
- 17. SALES TAX**—All sales are subject to state and local taxes, unless a proper exemption certificate including tax exempt number is presented at the time of payment.
- 18. BUYER'S PREMIUM**—The Auctioneer in its sole discretion may impose a Buyer's Premium on any goods sold. The Buyer's Premium is a percentage that is added to the final purchase price of any item. Applicable Buyer's Premium will be posted on the website.
- 19. SHIPPING**—All coolants, oil and fluids must be drained from all machinery and equipment prior to removal. All of the above must be shipped in compliance with state and federal regulations.
- 20. INSURANCE**—All buyers, or the buyer's riggers must provide the auctioneer, owner and landlord a certificate of insurance in amounts acceptable to the above parties prior to removal of any machinery and equipment.
- 21. ADDITIONAL TERMS AND CONDITIONS**—The auctioneer may modify or supplement these terms and conditions of sale by language in the Auctioneer's website, the catalog or via email to active bidders.
- 22. FALSE BIDS:** If the high bidder fails to complete the transaction Auctioneer reserves the right to dispose of the assets in the best interest of the seller. Any High Bidder that fails to complete a transaction will be held responsible for all damages resulting from that action.
- 23. MALFUCTION:** ANY Malfunction, Shutdown, or Temporary loss of Service involving bidding for Items may render the results of the auction Void. In such an event Auctioneer reserves the right to remedy the situation in whatever way best represents the seller, including canceling the existing bid.



CINCINNATI INDUSTRIAL AUCTIONEERS
auctioneers | appraisers | since 1961 | cia-auction.com | info@cia-auction.com
2020 Dunlap St., Cincinnati, Ohio 45214 Phone 513-241-9701 Fax 513-241-6760

AUCTION PURCHASE TERMS & REMOVAL AGREEMENT
TENNESSEE SCREW MACHINE CO., INC.
4209 Smithville Highway, McMinnville, TN 37110
BIDDING ENDS: THURSDAY, DECEMBER 5TH, 2019 – 11:00 AM

All purchasers of items at the Tennessee Screw Machine Co., Inc. auction conducted by Cincinnati Industrial Auctioneers, Inc. hereby agree to the following:

All purchasers agree to abide by the “Terms of Sale” as listed on our website and posted at the auction premises. The Auctioneer and Owner make no warranties express or implied as to merchantability, fitness for purpose, or condition of the articles being sold. All such expressed or implied warranties are expressly excluded hereby.

All items are purchased on an “As Is, Where Is” basis, with the purchaser to incur all costs in conjunction with the loading, shopping and removal of the items from the premises. ALLEQUIPMENTMUSTBEREMOVEDINA WORKMANLIKE MANNERANDALLUTILITIESMUSTBECAPPED. ALLANCHORBOLTSMUSTBECUTOFFAT FLOORLEVEL. ALL OILSANDCOOLANTSMUSTBEREMOVEDFROMMACHINESPRIORTOREMOVAL. All items are available for removal during normal business hours through Friday, December 13th, 2019 at 4:00 PM at which time our representatives will leave the premises. After this time arrangements for removal must be made by appointment with Auctioneer.

“TIME IS OF THE ESSENCE” regarding the removal of items from the premises. All items must be removed by Wednesday, December 18th, 2019 at 4:00 PM. Any items remaining after this time will be removed and stored at the expense of the buyer, subject to rent / access fees. NO EXCEPTIONS!

All purchasers and/or riggers of machinery MUST provide Cincinnati Industrial Auctioneers, Inc. and Tennessee Screw Machine, Co., Inc. a certificate of insurance in the amount of \$2,000,000.00 prior to removal. Cincinnati Industrial Auctioneers, Inc. and Tennessee Screw Machine Co., Inc. must be named on the policy as co-insurer.

There are NO REFUNDS, NO EXCHANGES, NO GUARANTEES OR NO WARRANTIES on any item, and ALL SALES ARE FINAL.

Accepted By Purchaser:

Company Name

Buyer Number / Username

Signature

Date

Tennessee Screw Machine Co., Inc. - TN
December 5, 2019



CINCINNATI INDUSTRIAL AUCTIONEERS
auctioneers | appraisers | since 1961 | cia-auction.com | info@cia-auction.com
2020 Dunlap St., Cincinnati, Ohio 45214 Phone 513-241-9701 Fax 513-241-6760

Catalog for Auction: Tennessee Screw Machine

This catalog is meant merely as a guide. The Auctioneers do not warrant the accuracy, genuineness, authenticity, description, weight, count or measure of any of the lots specified herein.

Lot Num	Qty.	Description	Lot Num	Qty.	Description
1	1	3/4" DAVENPORT 5-SPINDLE SCREW MACHINE; S/N 5698, WITH PICKOFF ATTACHMENT AND THREADING CLUTCH, SPINDLE STOPPING, 5-SPINDLE FEED REEL AND STAND (NEW 1967)	9	1	3/4" DAVENPORT 5-SPINDLE SCREW MACHINE; S/N 11421 (NEW 7-1984) WITH SPINDLE ALIGNMENT GEARS, PICK OFF, DEBURR, 4TH POS. THREAD ATTACHMENT *REBUILT 2005 APPROX.*, 5-SPINDLE FEED REEL AND STAND
2	1	3/4" DAVENPORT 5-SPINDLE SCREW MACHINE; S/N 8077 (NEW 11-1973), WITH THREADING CLUTCH, PICK OFF, DEBURR, ROLL-STAMP AND ALIGNING GEAR ATTACHMENTS AND OVERSIZE HEAD WITH REEL, 5-SPINDLE FEED REEL AND STAND	10	1	3/4" DAVENPORT 5-SPINDLE SCREW MACHINE; S/N 12004 (NEW 6-1983) WITH THREADING CLUTCH, PICK OFF AND DEBURR, SPINDLE STOP ATTACHMENTS AND 5TH POSITION CUT OFF SAW, 5-SPINDLE FEED REEL AND STAND
3	1	3/4" DAVENPORT 5-SPINDLE SCREW MACHINE; S/N 11002 (NEW 11-1981) WITH 4TH POS. THREAD ROLL, PICK OFF, DEBURR AND SPINDLE STOPPING ATTACHMENTS, LESS THAN 5,000 HOURS, NEW HEAD AND LONG BED, 5-SPINDLE FEED REEL AND STAND	11	1	3/4" DAVENPORT 5-SPINDLE SCREW MACHINE; S/N 7072 **THIS MACHINE IS PARTS ONLY SCREW MACHINE**
4	1	3/4" DAVENPORT 5-SPINDLE SCREW MACHINE; S/N 95442 (NEW 3-1978), LONG BED, PICK OFF, DEBURR, THREADING CLUTCH, 4TH POS. ADJUSTABLE CROSS-SLIDE ATTACHMENTS, 5-SPINDLE FEED REEL AND STAND	12	1	(LOT) (4) SKIDS MISCELLANEOUS DAVENPORT SCREW MACHINE PARTS AND ATTACHMENTS
5	1	3/4" DAVENPORT 5-SPINDLE SCREW MACHINE; S/N 10441 (NEW 6-1980), WITH THREAD AND PICK OFF ATTACHMENT, 5-SPINDLE FEED REEL AND STAND	13	1	(LOT) LARGE QUANTITY MISCELLANEOUS DAVENPORT ARMS AND GEARS
6	1	3/4" DAVENPORT 5-SPINDLE SCREW MACHINE; S/N 7884 (NEW 5-1973) WITH SPINDLE ALIGNMENT GEAR, 4TH POS. THREAD ROLL, 5TH POS. SWING ARM SLOTTING ATTACHMENT, 5-SPINDLE FEED REEL AND STAND	14	1	(LOT) MISCELLANEOUS DAVENPORT ATTACHMENTS AND TOOLING
7	1	3/4" DAVENPORT 5-SPINDLE SCREW MACHINE; S/N 4172 (NEW 10-1960), WITH PICK OFF, DEBURR, 4TH POS. REVOLVING SPINDLE, SAW CUTOFF ATTACHMENTS, 5-SPINDLE FEED REEL AND STAND	15	1	(LOT) MISCELLANEOUS DAVENPORT COLLETS
8	1	3/4" DAVENPORT 5-SPINDLE SCREW MACHINE; S/N 110012 (NEW 11-1981), WITH THREAD CLUTCH, PICK OFF, SPINDLE STOP, 4TH POS. ADJUSTABLE SLIDE ATTACHMENTS AND LONG BED, 5-SPINDLE FEED REEL AND STAND	16	1	YATES MACHINE MODEL C+ BORING MACHINE; S/N C+34 (NEW 7-2000) FITS DAVENPORT SCREW MACHINE
			17	1	TEN COLLET AIR / HYDRAULIC CHUCKING SYSTEMS
			18	1	(LOT) LARGE ASSORTMENT MISCELLANEOUS DAVENPORT TOOLING, ATTACHMENTS, GEARS, CAMS AND OTHER RELATED ITEMS WITH HEAVY DUTY STEEL WORK BENCHES
			19	1	(LOT) MISCELLANEOUS DAVENPORT TOOLING AND MACHNE PARTS WITH TWO-DOOR STRONGHOLD STYLE BIN CABINET
			20	1	(LOT) MISCELLANEOUS ELECTRICAL AND HARDWARE WITH TWO-DOOR STRONGHOLD STYLE BIN CABINET
			21	1	(LOT) MISCELLANEOUS DAVENPORT TOOLING WITH 12-DRAWER LISTA STYLE TOOL CABINET
			22	1	CINCINNATI MODEL 3 CENTERLESS GRINDER; S/N 3M3H5A-37 WITH INFEED AND OUTFEED CONVEYORS

Catalog for Auction: Tennessee Screw Machine

Lot Num	Qty.	Description	Lot Num	Qty.	Description
23	1	CINCINNATI MODEL 2 CENTERLESS GRINDER; S/N 2M2H1L-2202	36	1	18" BARRETT CENTRIFUGAL CHIP SPINNER; S/N 152239E
24	1	CINCINNATI MODEL 2 CENTERLESS GRINDER; S/N 2M2H1R-154 (NEW 1966) WITH INFEED AND OUTFEED CONVEYOR	37	1	6,000 LB. CAPACITY NISSAN MODEL KUGH02A30V LP GAS, TWO STAGE MAST, SOLID PNEUMATIC TIRE LIFT TRUCK; S/N KU9H02-900439, WITH SIDESHIFT, 130" MAX LIFT HEIGHT, 87" MAST, 42" FORK, 7,475 HOURS SHOWING, JOY STICK CONTROL (NO TANK - PROPERTY OF AMERCAS)
25	1	CINCINNATI MODEL 2 CENTERLESS GRINDER; S/N 2M2H1L-2160 WITH INFEED AND OUTFEED CONVEYORS	38	1	20" X 40" VICTOR MODEL 2040 GEARED HEAD ENGINE LATHE; S/N 6002, MACHINE # 76018 (NEW 7-1976)
26	1	1-1/2" CAPACITY BROWN AND SHARPE MODEL 2G AUTOMATIC SCREW MACHINE; S/N 12174	39	1	6" X 18" CHEVALIER MODEL FSG618 HAND FEED SURFACE GRINDER; S/N 02C-5136
27	1	LIPE-ROLLAWAY MODEL 125-AML AUTOMATIC BAR FEED; S/N 4643	40	1	5" X 10" TAFT-PEIRCE HAND FEED SURFACE GRINDER; S/N N/A
28	1	WARNER AND SWASEY MODEL 3 LATHE; S/N 663697	41	1	10" CENTRAL MACHINERY MODEL 1016B FLOOR DRILL; S/N 0937415
29	1	20" X 36" APPROX. SHEN-JAY MODEL SJ-17400G GEARED HEAD ENGINE LATHE; S/N 570618, 2" THRU HOLE, QUICK CHANGE TOOL POST HOLDER	42	1	48" DIAMETER BILT-RITE MODEL RT820 FLOOR TURN TABLE; S/N 32209
30	1	JOHNFORD MODEL ST-70 SLANT BED CNC LATHE; S/N TT0013 (NEW 2000), 12" CHUCK, 36" SWING OVER BED, 27" SWING OVER CROSS-SLIDE, 14.6" X-AXIS, APPROX. 60" Z-AXIS, 20-3,000 RPM SPINDLE SPEEDS, FANUC SERIES 18-T CONTROIS, 45 KVA, 220 VOLTS / 60 HZ / 3-PHASE, 150 AMP CHIP CONVEYOR, CABINET WITH EXTRA CHUCK JAWS, PARTS AND FOOT CONTROL ** MACHINE ONLY, NO TOOLBOX OR OTHER EQUIPMENT IN PHOTO **	43	1	30 TON SHOP BUILT MANUAL HYDRAULIC SHAFT STRAIGHTENER WITH CAPACITY UNKNOWN MANUAL HAND STRAIGHTENER
31	1	JOHNFORD MODEL VMC1620 CNC VERTICAL MACHINING CENTER; S/N F6052 (NEW 1996), 26" X 58" ALPHA MAGNET CHUCK, 20-POSITION TOOLHOLDER, MITSUBISHI CONTROLS, CHIP CONVEYOR, 45 KVA, 75 AMP, 220 VOLT / 60 HZ / 3-PHASE	44	1	5,000 LB. CAPACITY X 60" X 60" PLATFORM SCALE WITH AND MODEL FC-10K DRO COUNTING SCALE
32	1	26" X 71" ALUMINUM FIXTURE PLATE FITS JOHNSFORD VMC-1620	45	2	5,000 LB. AND 1,500 KG HAND HYDRAULIC PALLET TRUCKS
33	1	MR. DEBURR MODEL 300 DEBURRING SYSTEM; S/N N/A, 13" X 31" X 14" U-SHAPED TROUGH, 3 HP MOTOR, SINGLE PHASE	46	1	230 AMP BUZZ BOX WELDER WITH SOLAR 670 FLEET BATTERY CHARGER / ENGINE STARTER
34	1	HURRICANE MODEL 50RD PARTS WASHER; S/N 43709-002 (NEW 1997), 8,736 HOURS SHOWING, 3-PHASE	47	1	48" X 96" X 6" THICK BLACK GRANITE SURFACE PLATE WITH STAND AND 18" X 24" X 5" THICK STARRETT TWO LEDGE SURFACE PLATE
35	1	BARRETT CENTRIFUGAL MODEL CHIP WRINGER & OIL RECLAMATION SYSTEM; S/N 136385F, WITH BARRETT CENTRIFUGAL LOADER / AUGER OIL RECLAMATION AND RECLAMET MODEL MATERIAL LOADER RECLAMATION; S/N 2162	48	1	(LOT) MISCELLANEOUS GRINDING SPIN FIXTURES
			49	1	(LOT) (2) DRUMS MEDIA
			50	1	CRATE MISCELLANEOUS BENCH PRESSES
			51	45	APPROX. 24" X 50" X 48" HIGH HEAVY DUTY PORTABLE MULTI LEVEL MATERIAL CARTS ** CARTS ONLY, NO MATERIAL **
			52	8	MISCELLANEOUS LENGTH HEAVY DUTY BAR STOCK CARTS **NO MATERIAL CARTS ONLY**
			53	12	CHIP CARTS
			54	2	100 LB. CAPACITY METTLER-TOLEDO MODEL 8582 COUNTING SCALES WITH (1) 65 LB. CAPACITY ULINE MODEL H-1117 COUNTING SCALE

Catalog for Auction:Tennessee Screw Machine

Lot Num	Qty.	Description	Lot Num	Qty.	Description
55	1	CINTAS AUTOMATED EXTERNAL DEFIBRILLATOR			
56	1	(LOT) MISCELLANEOUS SHOP SUPPLIES WITH SHELVING AND STORAGE CABINET			
57	1	2-HP BRIDGEPORT SERIES I VERTICAL MILL			
58	1	LIBERTY INDUSTRIES MODEL 500S ROTARY PALLET STRETCH WRAPPER			
59	1	LIPE MODEL 2AML BAR FEED S/N 11328			
60	1	BROWN AND SHARPE NO. 2 SCREW MACHINE S/N 542-2-7828			
61	1	BROTHER MODEL TC-S2A-O CNC DRILL AND TAP MACHINE; S/N 113839			
62	1	13" OPG OPTICAL COMPARATOR			
63	1	2,000 LB. CROWN WALK BEHIND ELECTRIC STACKER			
64	1	SINGLE SIDE CANTILEVER RACK (NO BAR STOCK)			
65	1	CART CADDY WALK BEHIND TUGGER S/N 302291			
66	1	TOYOTA SIT-DOWN ELECTRIC LIFT TRUCK			
67	1	WARNER SWASEY NO. 5 TURRET LATHE			
68	1	(LOT) VARIOUS PALLET RACK			
69	1	10" X 12" MASTER CUT MODEL S-300HA AUTOMATIC HORIZONTAL BAND SAW			
70	1	MIST AWAY MIST COLLECTOR			
71	2	SELF DUMPING HOPPER			
72	1	(LOT) GRINDER CONVEYORS			
73	1	(LOT) BROWN AND SHARPE TOOLING AND PARTS			